



# **CONSTRUCTION & MINING EQUIPMENT**

## **INDUSTRY GROUP**

### **POSITION PAPER**

**DISCLAIMER:** CMEIG is a non-profit organization sponsored by companies involved in the supply of products and services in the construction and mining equipment supply industry in Australia. This document has been prepared by members of CMEIG and is distributed by the Association. This information is provided for guidance only and no legal liability can be accepted by the Association for its use. CMEIG advises that you should seek appropriate specialist advice for your solution.

### **IMPORTATION OF NEW/USED MACHINERY**

Australia imports nearly all of its new earthmoving, construction and mining machinery and a large number of used machines. New and used machinery of this nature poses a large threat to Australia's unique environment, its flora and fauna, through the introduction of soil, plant material and other Quarantine Risk Materials (QRM).

The Australian Quarantine and Inspection Service (AQIS) protects Australia's unique environment and agricultural industries from exotic pests and disease by monitoring our borders.

This CMEIG Position Paper sets out the responsibilities of importers of both new and used earthmoving, construction and mining machinery.

### **NEW EARTHMOVING, CONSTRUCTION AND MINING MACHINERY**

New earthmoving, construction and mining machinery does not currently require an AQIS Import Permit in order to enter Australia. New machinery imported into Australia may be subject to AQIS inspection to ensure that the machinery is new and free of contamination.

New machinery is often contaminated through poor loading practices or by being field tested before shipment to Australia. New machines are often loaded in wet, muddy conditions, which results in contamination with soil and plant material. New machinery that is found by AQIS to be heavily contaminated may not be allowed entry to Australia.

A common problem is “soil splash”, which is a thin film of soil which adheres to machinery tracks, tyres and panels during the loading process. This contamination is unacceptable and should be removed prior to import. Low levels of contamination will need to be removed by an AQIS approved cleaning provider.

To prevent delays and to reduce cleaning costs, all machinery must be loaded in clean conditions to prevent contamination.

All machinery that is tested in the field or in a factory using agricultural products is considered by AQIS to be used machinery and will therefore require an AQIS Import Permit and will be inspected by AQIS on arrival into Australia.

## **USED EARTHMOVING, CONSTRUCTION AND MINING MACHINERY**

All imported used earthmoving, construction and mining machinery requires an AQIS Import Permit. It is a condition of the permit that machines arrive in a clean state. AQIS defines clean as “clean as new” and has a nil tolerance for soil or other contaminated materials. Clean machinery / spare parts will have undergone a prior comprehensive cleaning process. This process may involve the machinery being partially dismantled in the port of origin to facilitate thorough cleaning prior to export. All possible sites of contamination must be cleaned including tracks, tyres, panels, cabs (inside and outside) channels, engine compartments, buckets and blades. In short, access to all areas will be required to ensure freedom from contamination. Contaminated oil and grease stains and residue must be removed as this can harbor soil, seeds and other contamination.

Earthmoving, construction and mining machinery imported into Australia which is not “clean as new” on arrival will be subject to additional cleaning costs and may face considerable delays in clearance times.

Earthmoving, construction and mining equipment which is found to have a high level of contamination on arrival into Australia will not be allowed entry and will be directed for export. Many shipments of used earthmoving machinery have already been refused entry and have been directed for export. The consignments have included:

- bulldozers
- wheel loaders
- excavators
- drill rigs
- soil compactors / stabilisers

- backhoe loaders
- skid steer loaders
- motor graders
- trenchers

Some examples of equipment which have been refused entry and exported from Australia are shown in the figures below:



Figure 1



Figure 2



Figure 3

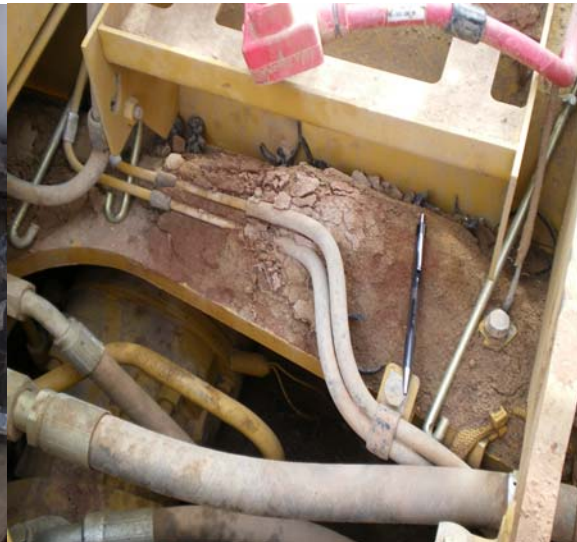


Figure 4

It is quite obvious from these photographs that there has been no effort to clean the machines pictured as there are high levels of contamination. These levels of contamination are completely unacceptable and fall well short of the AQIS import conditions of clean as “clean as new”. Machinery with this level of contamination is in breach of the AQIS Import Permit conditions and, therefore, AQIS are well within their rights to refuse entry of the machines into Australia. Machines directed for export may be shipped to any overseas port where they can be cleaned to AQIS standards, thus satisfying the conditions of the AQIS Import Permit.

Used earthmoving, construction and mining machinery with “low levels of contamination” can be dealt with on arrival into Australia. AQIS defines “low levels of contamination” as the presence of very small amounts of contamination on the machinery. Machines with low levels of contamination will be subject to dismantling and cleaning to ensure all contamination is removed. Access to all areas will be required, therefore all non-affixed panels, belly plates, covers and guards will need to be removed from the machinery to be inspected.

The AQIS website contains machinery cleaning guides and checklists which have been developed to assist importers and offshore cleaning contractors to meet the AQIS Import Permit conditions of ‘clean as new’. The AQIS website also provides access to the Import Conditions Database (ICON), which contains the import conditions for all commodities including machinery.

The machinery cleaning guides and checklists provide a pictorial and written explanation of the areas in earthmoving, construction and mining machinery that can harbor quarantine risk material (QRM). The machinery cleaning guides cover a variety of different types of earthmoving, construction and mining machinery currently imported into and used in Australia.

AQIS also publishes a document titled “Importers Information for Offshore Inspections of Machinery and Equipment” which provides importers with details of the information and guidance to successfully initiate, manage and complete an offshore inspection of earthmoving, construction and mining machinery.

## **AQIS IMPORT PERMIT FOR IMPORTATION OF USED EARTHMOVING, CONSTRUCTION AND MINING MACHINERY**

Applications to import used earthmoving, construction and mining machinery can be lodged electronically through the e-Lodgement facility or manually through the Machinery and Military National Coordination Centre (M&MNCC) at [aqis.machinery@aqis.gov.au](mailto:aqis.machinery@aqis.gov.au).

The following link will take you to the page on the AQIS website with the machinery application form:

<http://www.daff.gov.au/aqis/import/application/forms/agricultural-products>

The following link will take you to ICON on the AQIS website:

<http://www.aqis.gov.au/icon32/asp/exquerycontent.asp>

AQIS risk assesses each application on a case by case basis and may seek additional information before approving or declining an Import Permit.

CMEIG has worked closely with AQIS and the AQIS Industry Cargo Consultative Committee (AICCC) through membership of the Machinery Consultative Group to ensure that industry does all it can to assist in protecting Australia's flora and fauna from contamination attached to imported earthmoving, construction and mining machinery. All companies engaged in the importation of both new and used earthmoving machinery are strongly encouraged to refer to the AQIS website indicated below for the conditions of entry and cleanliness requirements for this machinery. Importers are also encouraged to consult with specialist machinery brokers / freight forwarders who can provide assistance with the importation of this machinery, particularly used machinery. A list of these companies is available from the CMEIG office.

**POSITION PAPER - OCTOBER 2008  
CONSTRUCTION & MINING EQUIPMENT INDUSTRY GROUP INC**

For more information about CMEIG, call (02) 9712 1497 or email:  
[inquiry@cmeig.com.au](mailto:inquiry@cmeig.com.au)

**WEBSITES:**

<http://www.daffa.gov.au/aqis/import/vehicles-machinery/regulations>

<http://www.aiccc.com/Online.html>